



Duesseldorf, Germany | September 28, 2015

Press Release

FOR IMMEDIATE RELEASE

SAFECHEM Circular Economy Business Case presented at the Sustainable Chemistry Conference in Berlin

Berlin, September 25, 2015: SAFECHEM was invited to present a business case together with the German Asphalt Paving Association at the International Sustainable Chemistry Conference “The Way Forward” in Berlin.

More than 190 attendees from the industry as well as authorities like the EPA, associations and NGOs attended the conference “Sustainable Chemistry 2015: the way forward” in Berlin on September 24 and 25, 2015. The conference was organized by the German Federal Ministry for the Environment, Nature Conservation, Building and Nuclear Safety (BMUB) and the German Federal Environment Agency (UBA) in cooperation with the Green Chemistry Commerce Council (GC3) and the Deutsche Bundesstiftung Umwelt (DBU). The agenda contained high-level panel discussions, presentations and exchanges between international experts and decision makers. Selected companies presented “best-of-examples” from the industry unveiling approaches to protect human health and the environment while generating economic benefits. One best-of-example was SAFECHEM Europe GmbH (SAFECHEM), a wholly owned subsidiary of The Dow Chemical Company, who was invited to present the business case “Authorization of TRI for Asphalt Quality Analysis” together with the German Asphalt Paving Association.

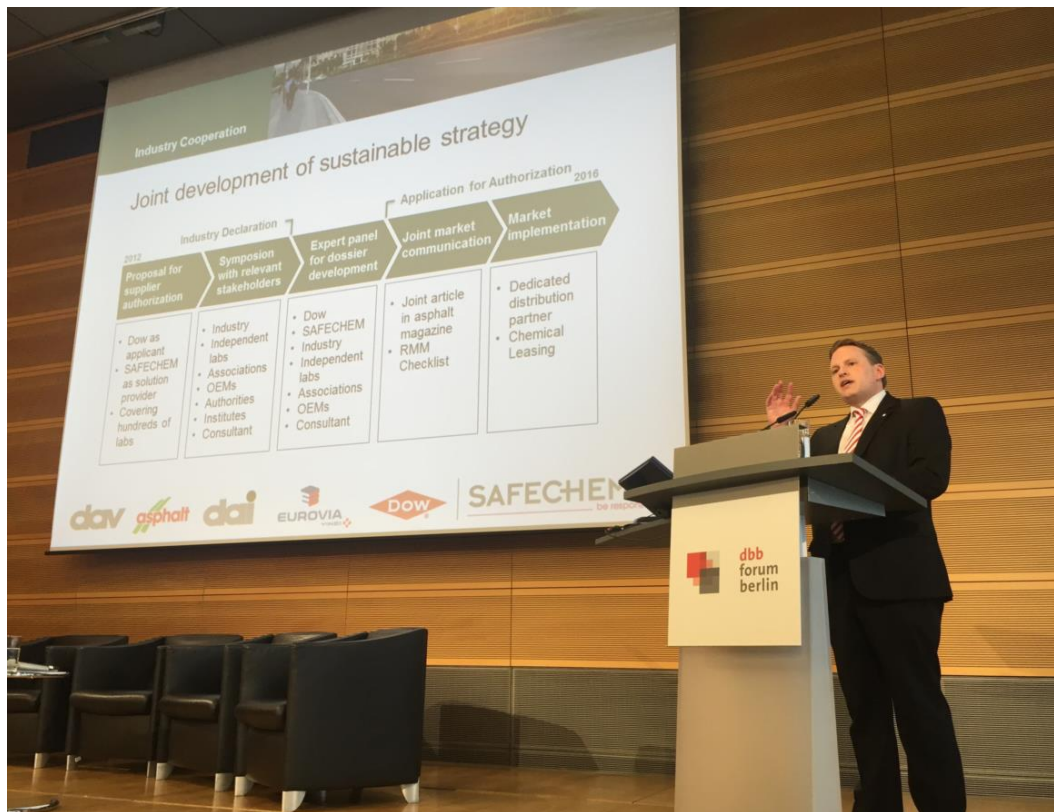
SAFECEM Circular Economy Business Case presented at the Sustainable Chemistry Conference in Berlin

The German Asphalt Industry uses Trichloroethylene (TRI) as extraction solvent for bitumen in asphalt quality analysis. Currently TRI is seen as indispensable for this application. The presentation highlighted how SAFECEM works with all stakeholders along the supply chain in order to obtain an authorization of TRI under REACH in the future. Partners include industry associations, chemical distribution, cleaning equipment manufacturers and waste managers. The result is a best practice risk management strategy aligned to the principles of Circular Economy. It is based on the closed-loop solution from SAFECEM: the customer is supplied with fresh solvent in the SAFE-TAINER™ System and used solvent is taken-back for recycling. Combined with a whole range of services to optimize the chemical use, this solution is embedded in a performance-oriented Chemical Leasing model.

“I was very pleased about the high number of positive comments related to this Circular Economy case. Especially the close application-specific relationship with the industry makes this business case unique.” says Steffen Saecker, Business Manager at SAFECEM, who presented the case together with Knut Johannsen, head of material testing at EUROVIA Services GmbH, head of the working group “asphalt technology” at the German Asphalt Paving Association and chairman of the German Asphalt Institute.

###

SAFECEM Circular Economy Business Case presented at the Sustainable Chemistry Conference in Berlin



Steffen Saecker presenting the SAFECEM Circular Economy business case

Press contacts:

Content Information

Steffen Säcker

SAFECEM Europe GmbH
Tersteegenstr. 25
40474 Duesseldorf

Phone: +49 (0)211 4389-318

Email: s.saecker@safechem-europe.com

PR Information

Christine Lissy

SAFECEM Europe GmbH
Tersteegenstr. 25
40474 Duesseldorf

Phone: +49 (0)211 4389-311

Email: c.lissy@safechem-europe.com

Author

Christine Lissy